

Woodside Elementary School

PTA Meeting - September, 2019



AERIAL VIEW - BEFORE

Woodside Elementary School
September, 2019



Woodside Elementary School

PTA Meeting - September, 2019

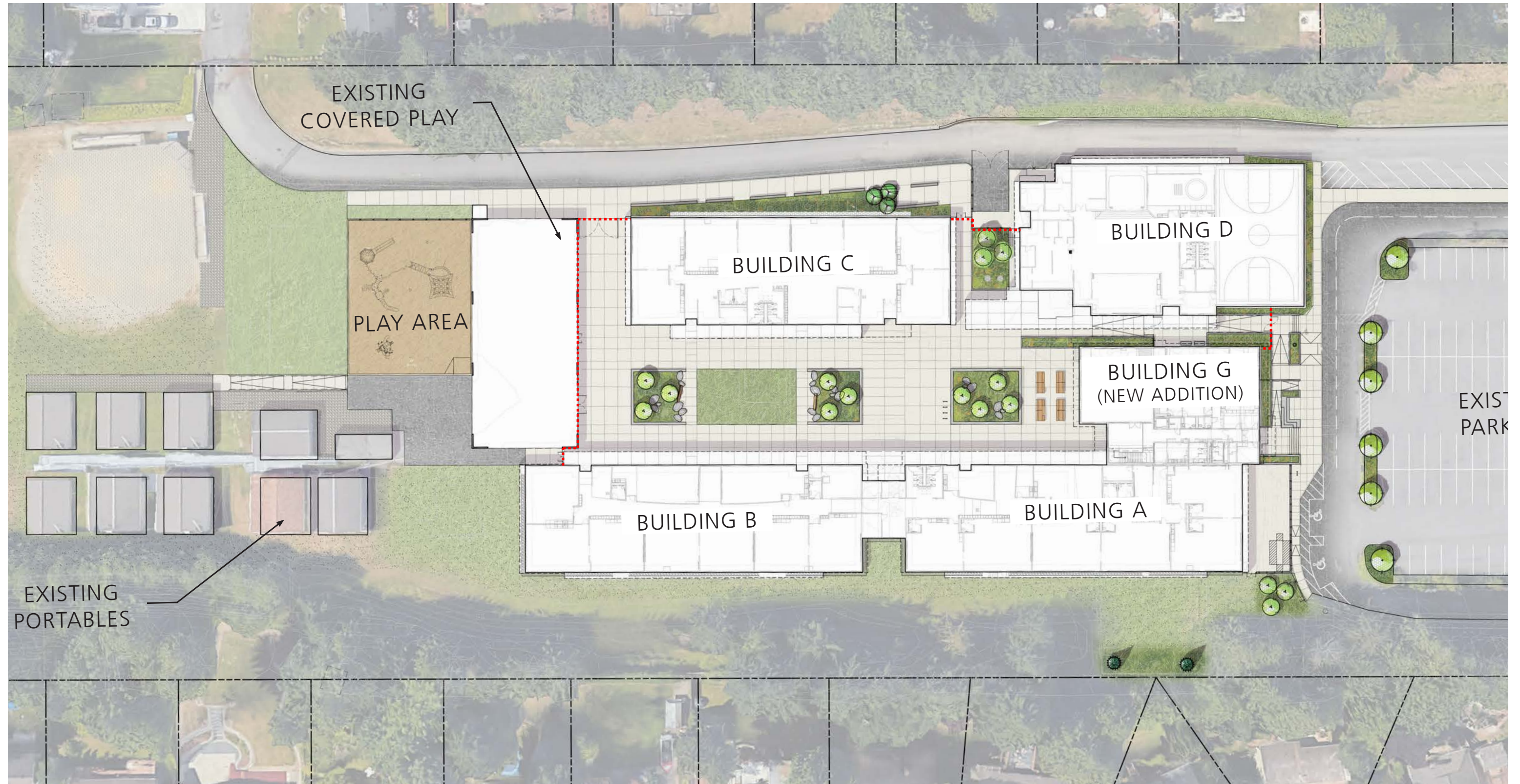


AERIAL VIEW - AFTER

Woodside Elementary School
September, 2019



SITE PLAN
SCALE: NTS



Woodside Elementary School
September, 2019



PARKING LOT USE DURING CONSTRUCTION

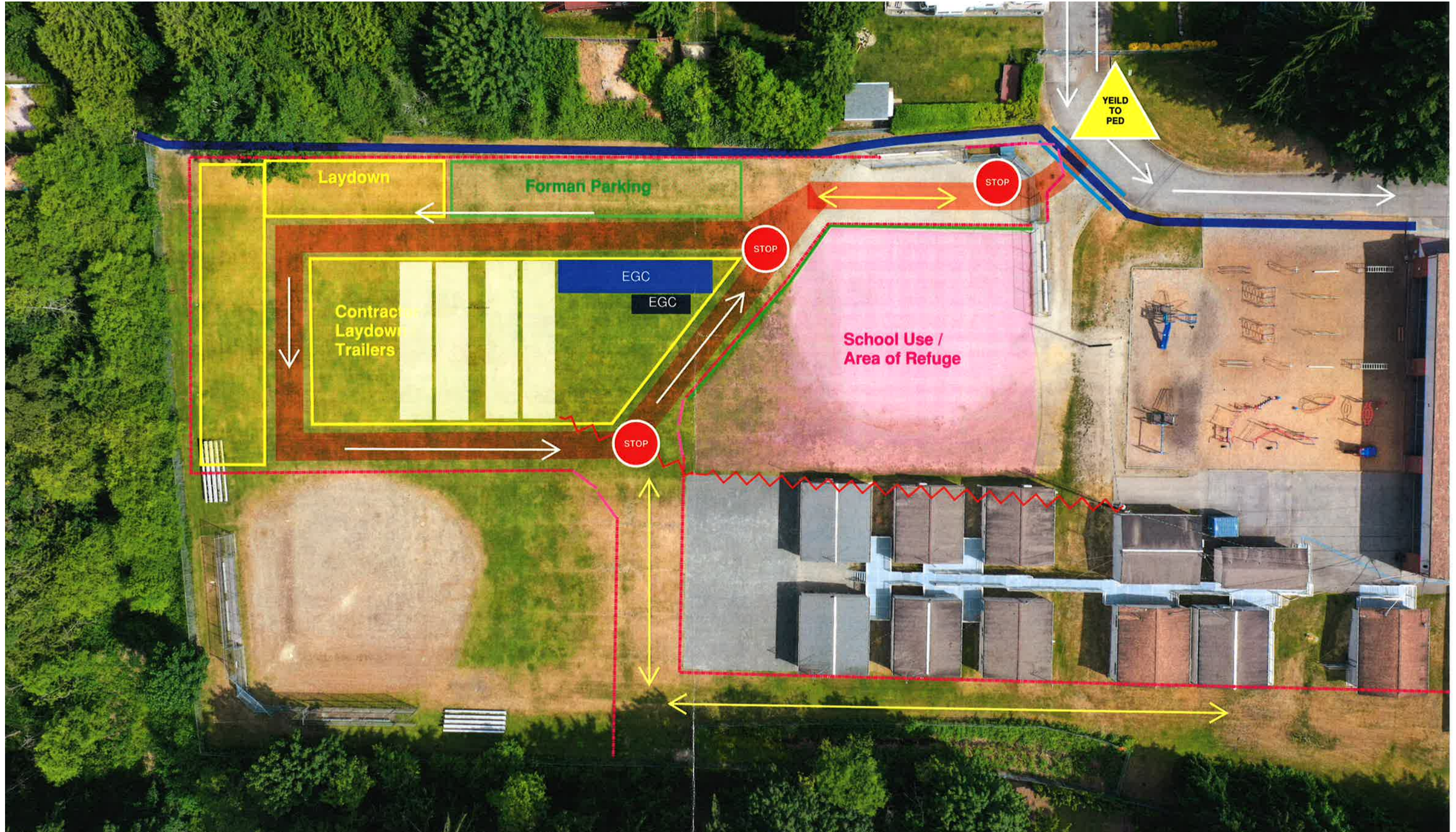
SCALE: NTS



Woodside Elementary School
September, 2019



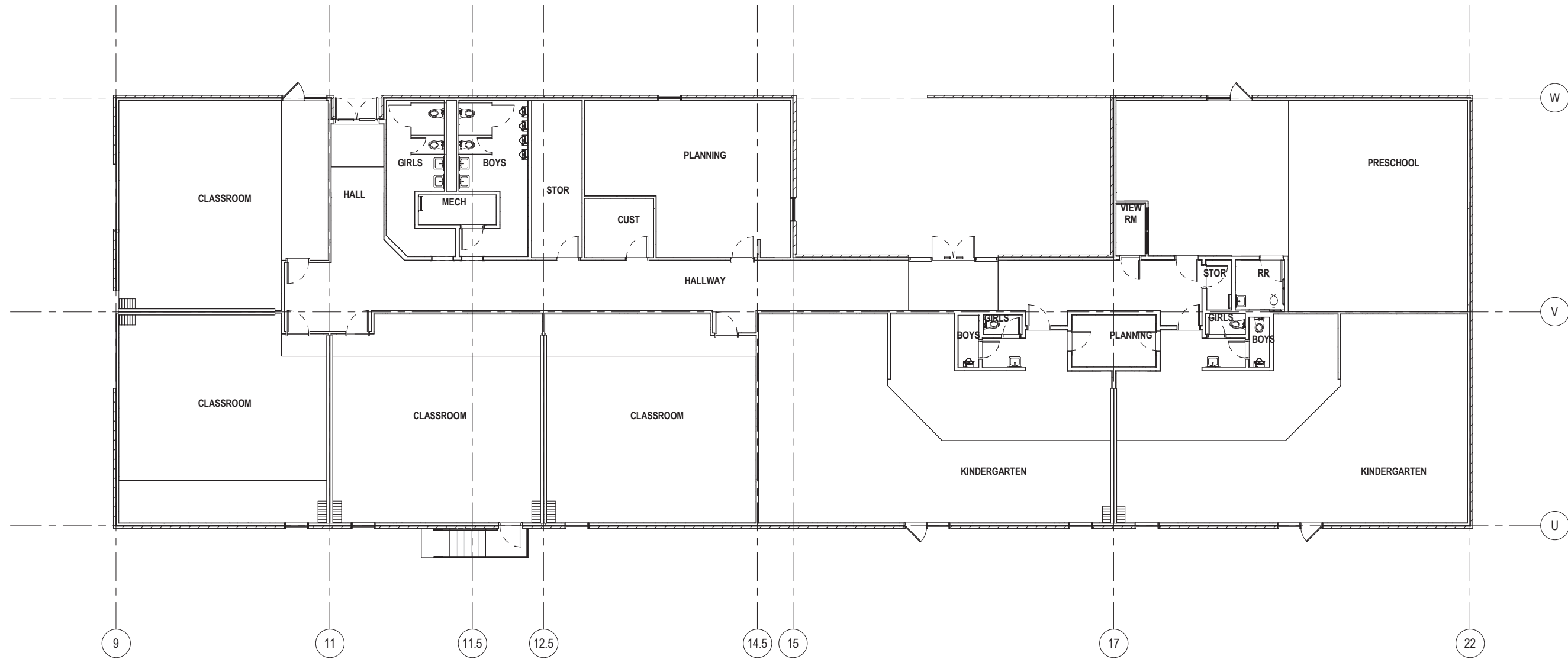
FIELD USE DURING CONSTRUCTION
SCALE: NTS



Woodside Elementary School
September, 2019



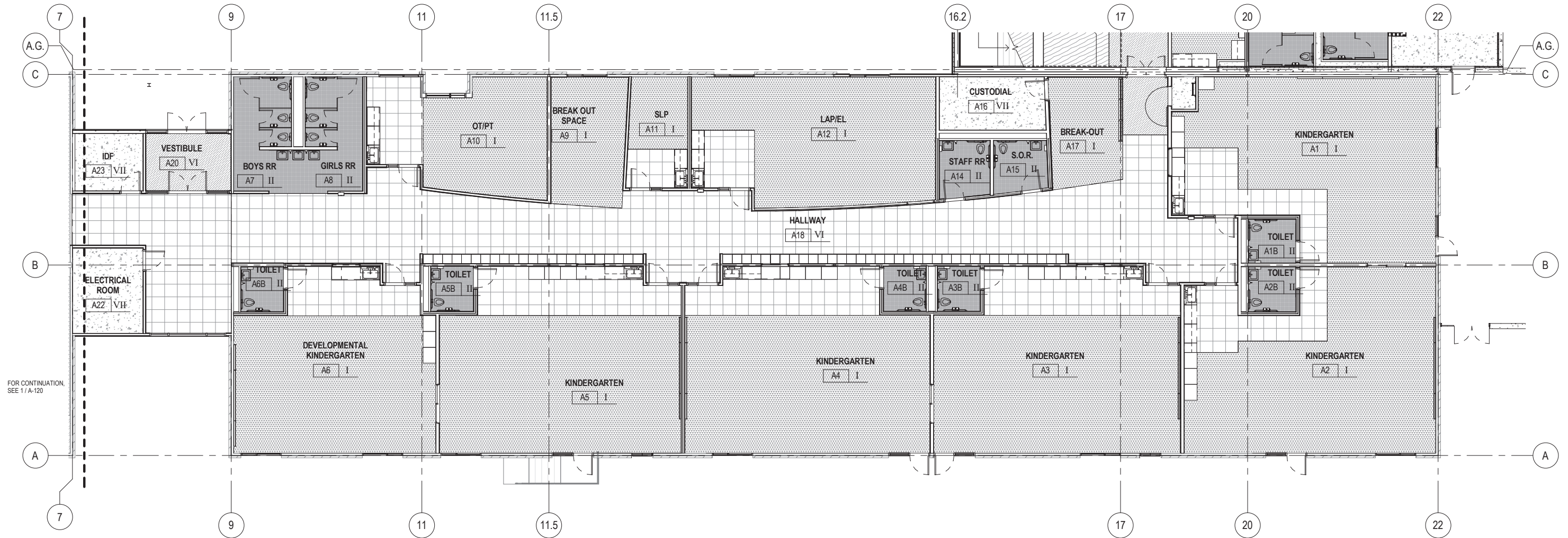
BLDG A - EXISTING
SCALE: 1/16" = 1'-0"



Woodside Elementary School
September, 2019



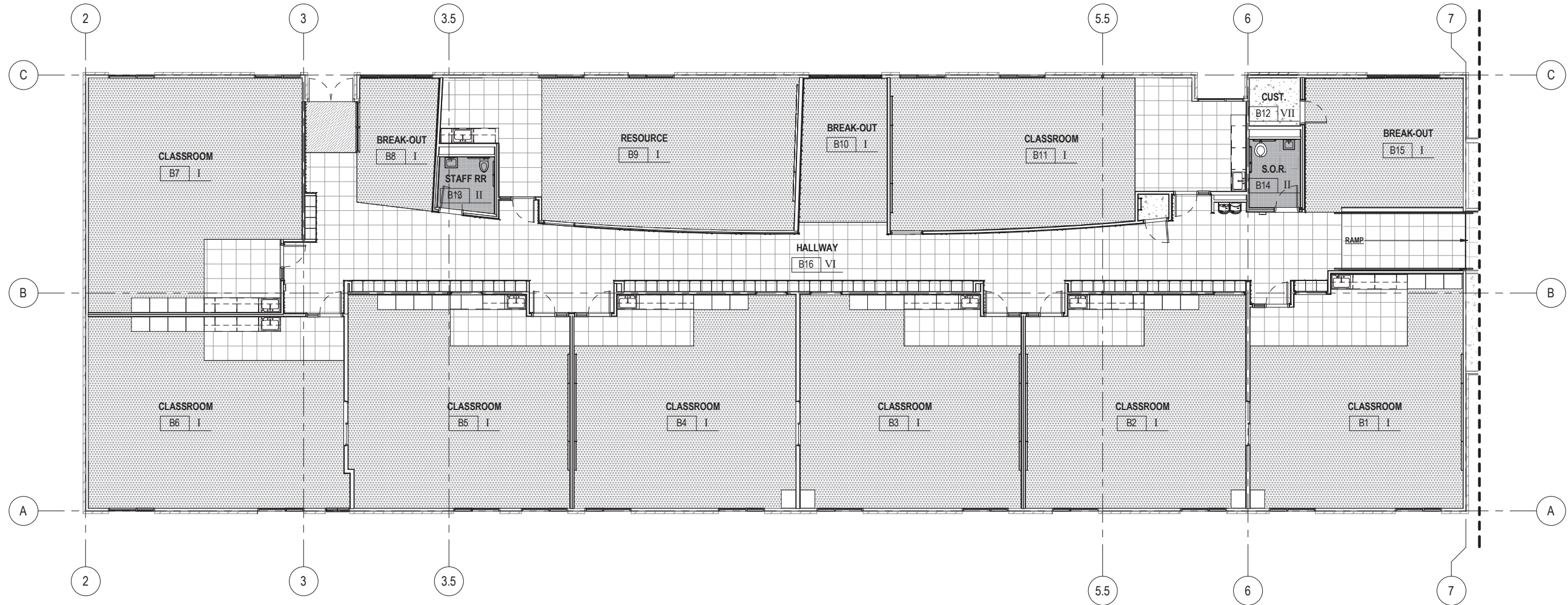
BLDG A - FLOOR PLAN
SCALE: 1/16" = 1'-0"



Woodside Elementary School
 September, 2019



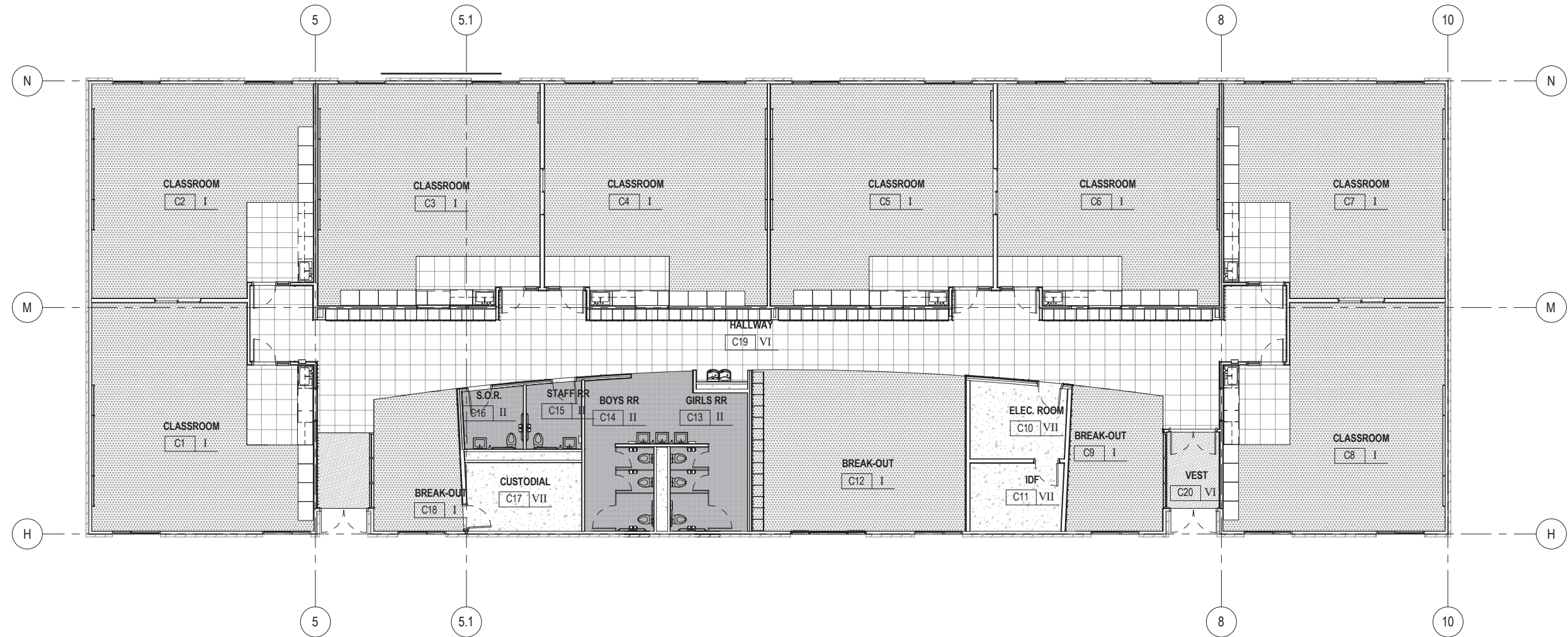
BLDG B - FLOOR PLAN
SCALE: 1/16" = 1'-0"



Woodside Elementary School
September, 2019



BLDG C - FLOOR PLAN
SCALE: 1/16" = 1'-0"



Woodside Elementary School
September, 2019



BLDG A/B/C - INTERIOR VIEWS



BLDG A/B/C BREAK OUT SPACE



EXISTING HALLWAY



BLDG A (B/C SIM) HALLWAY

Woodside Elementary School
September, 2019



BLDG A/B/C - INTERIOR VIEWS



CLASSROOM HALLWAY



EXISTING HALLWAY

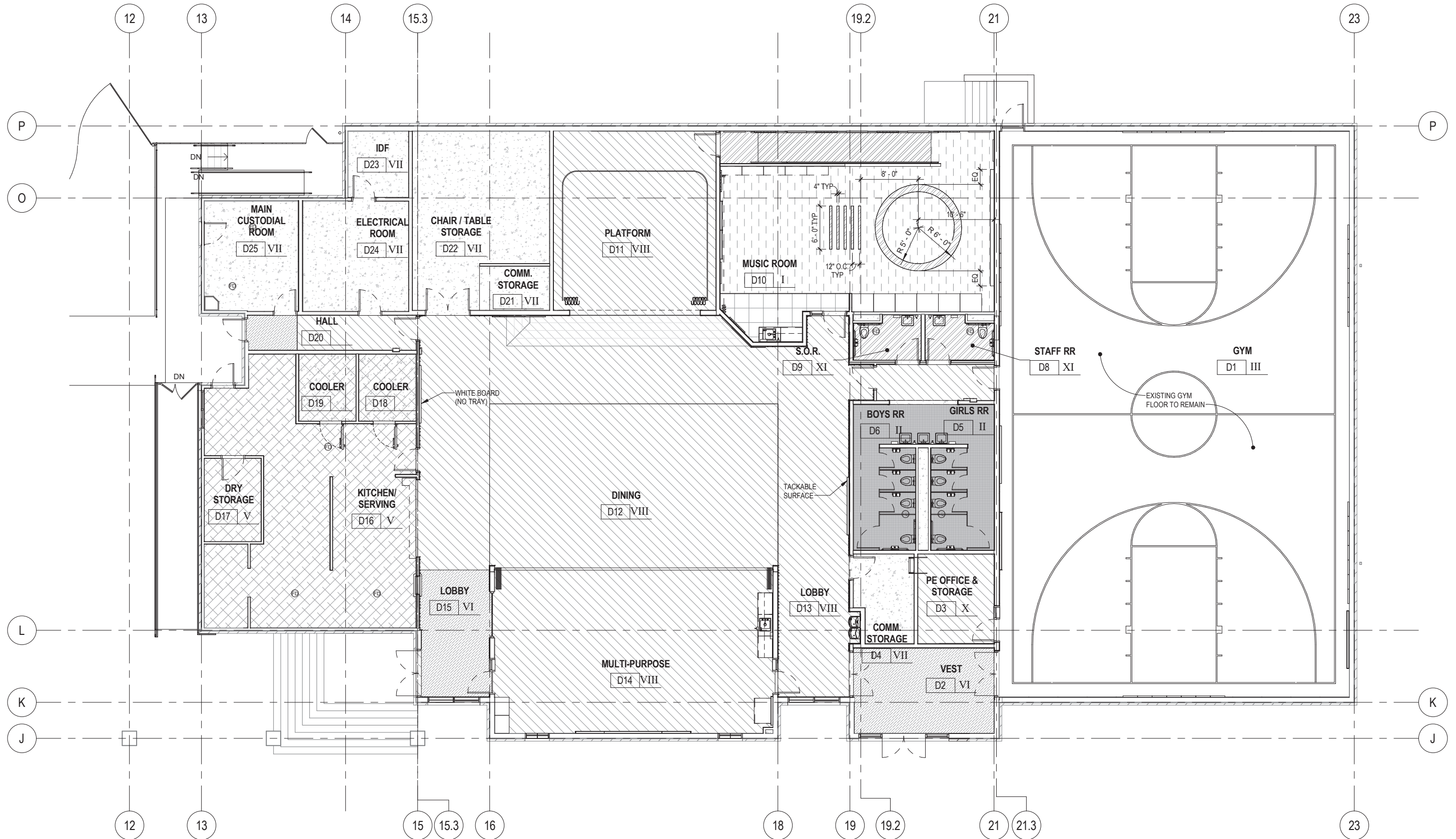


CLASSROOM HALLWAY AT LIGHTWELL

Woodside Elementary School
September, 2019



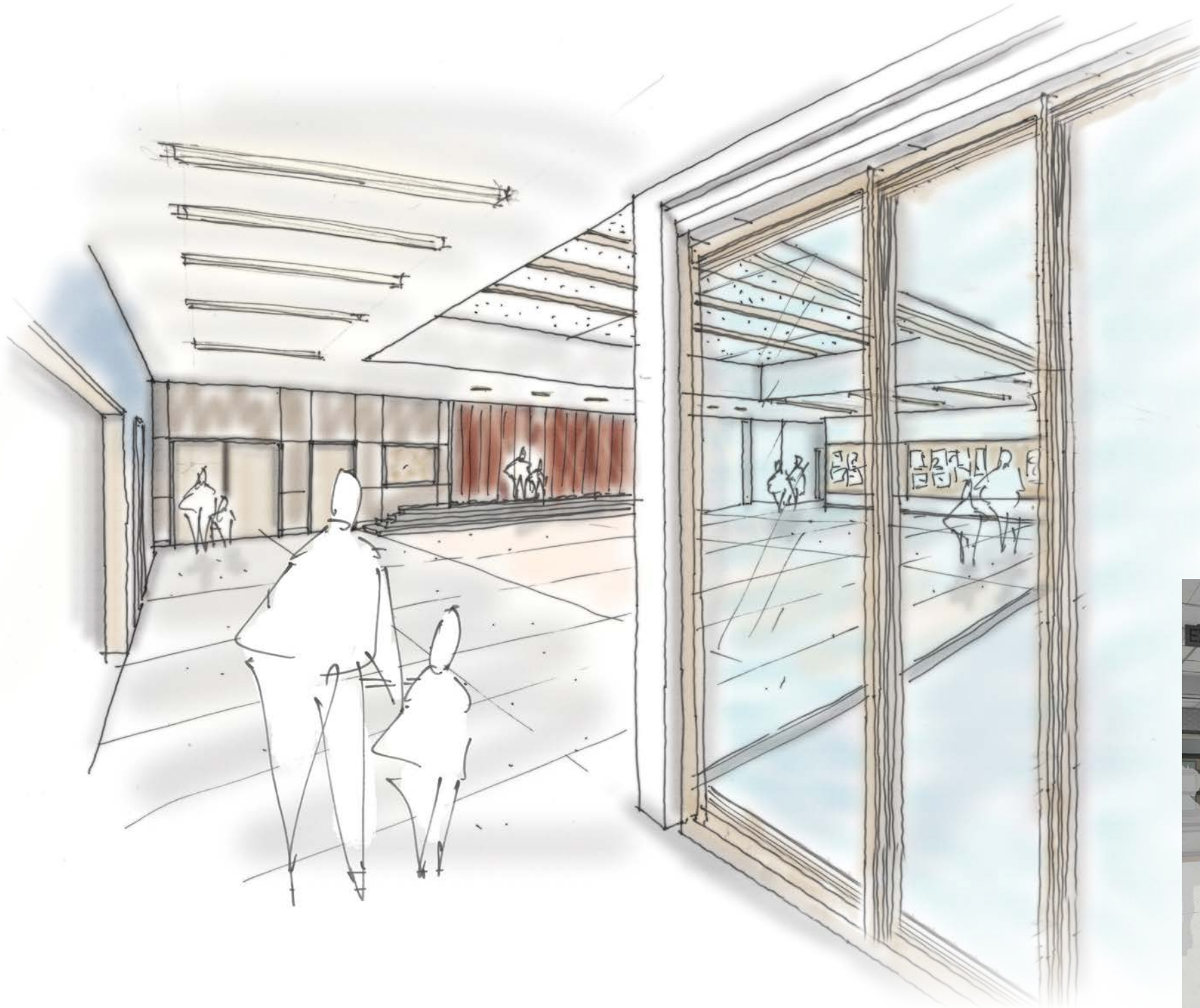
BLDG D - FLOOR PLAN
SCALE: NTS



Woodside Elementary School
September, 2019



BLDG D - INTERIOR VIEWS



BLDG D - DINING / STAGE



EXISTING CAFETERIA

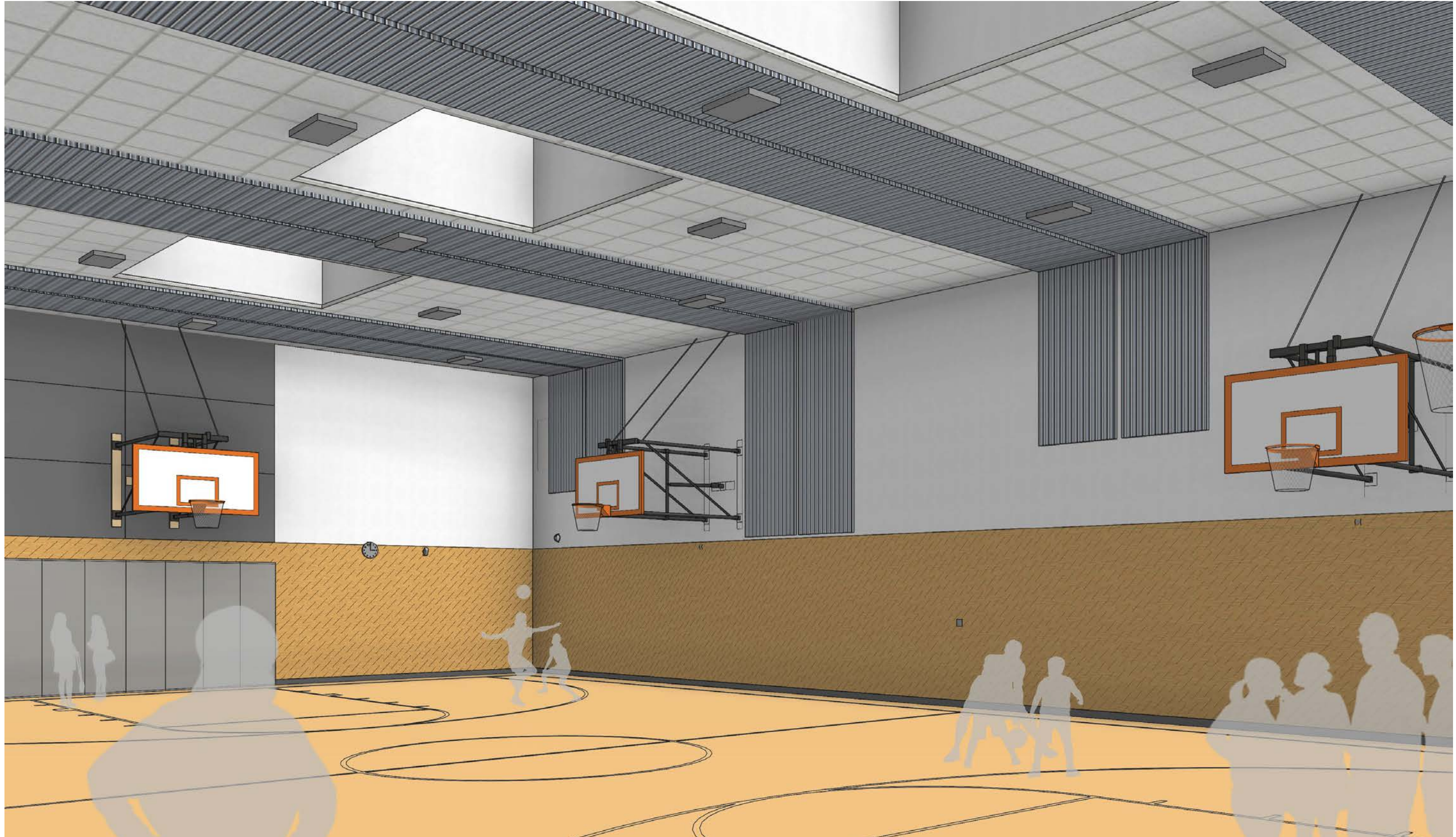


BLDG D - DINING / MULTIPURPOSE

Woodside Elementary School
September, 2019



BLDG D - VIEW OF GYM



Woodside Elementary School
September, 2019



BLDG G - Exterior Sketches



ENTRY FROM PARKING LOT

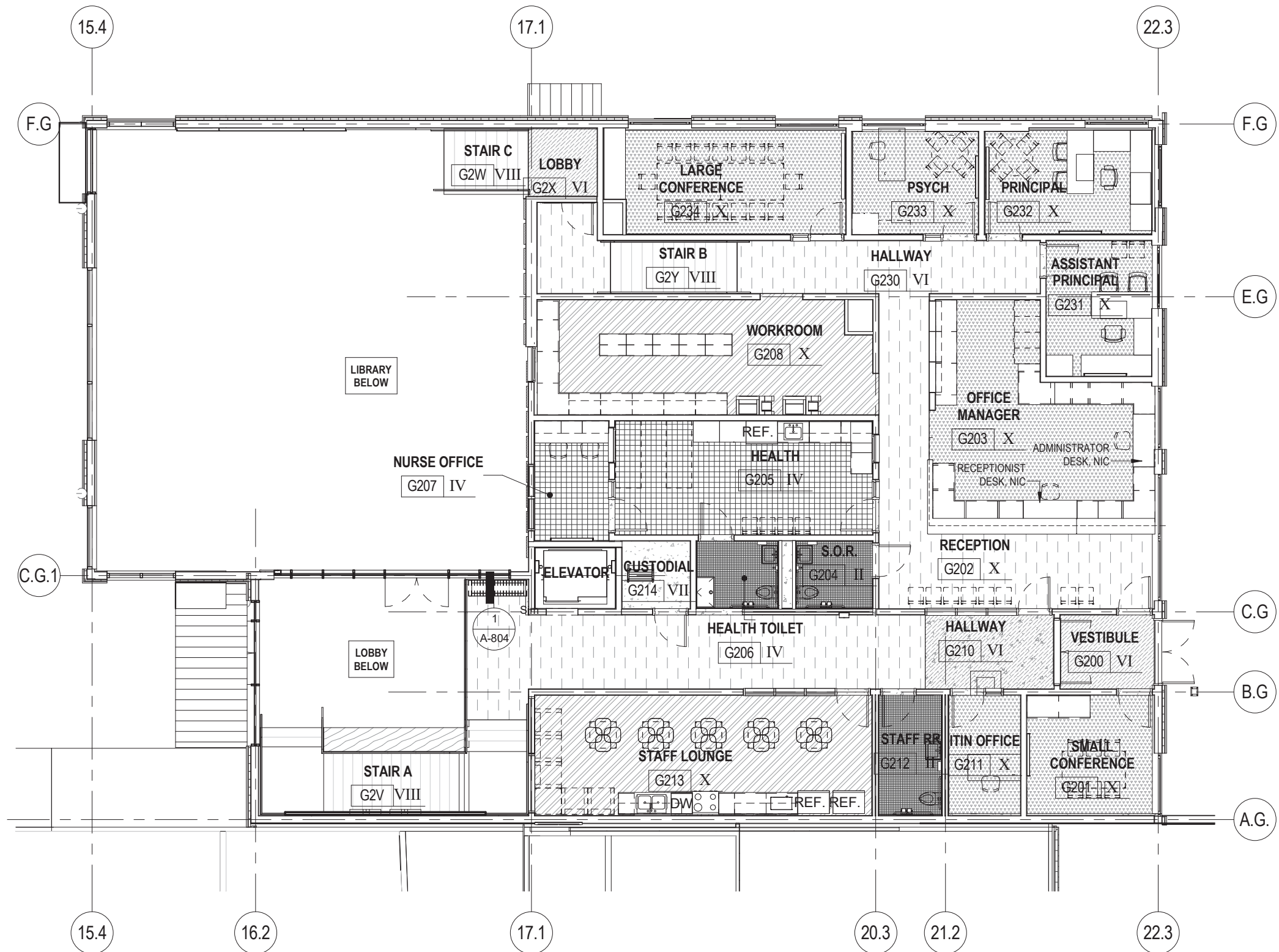


VIEW FROM COURTYARD

Woodside Elementary School
September, 2019



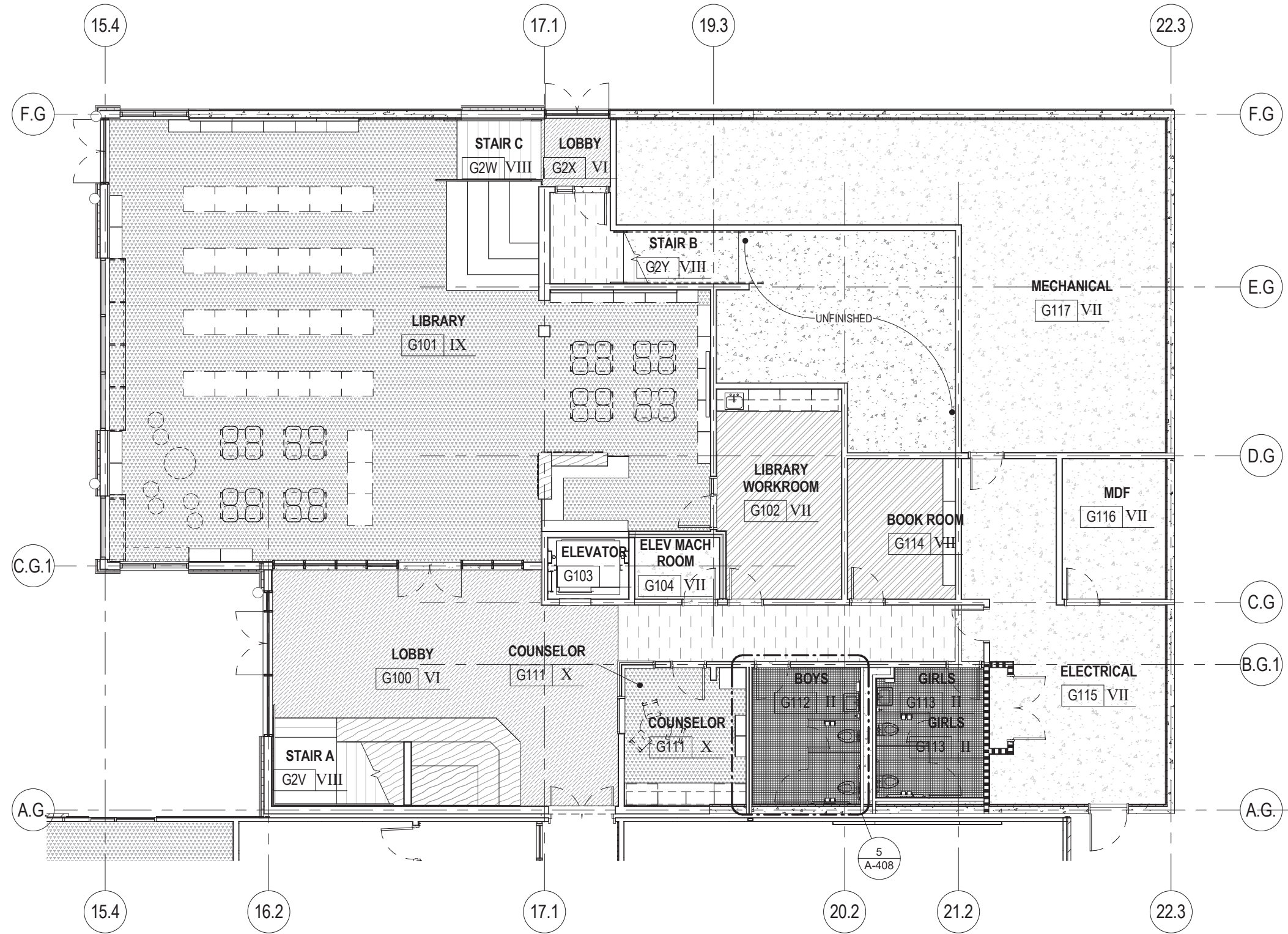
BLDG G - FLOOR PLAN - PARKING LEVEL
SCALE: NTS



Woodside Elementary School
 September, 2019



BLDG G - FLOOR PLAN - GROUND LEVEL
SCALE: NTS



Woodside Elementary School
 September, 2019



BLDG G - INTERIOR VIEWS



BLDG G LIBRARY

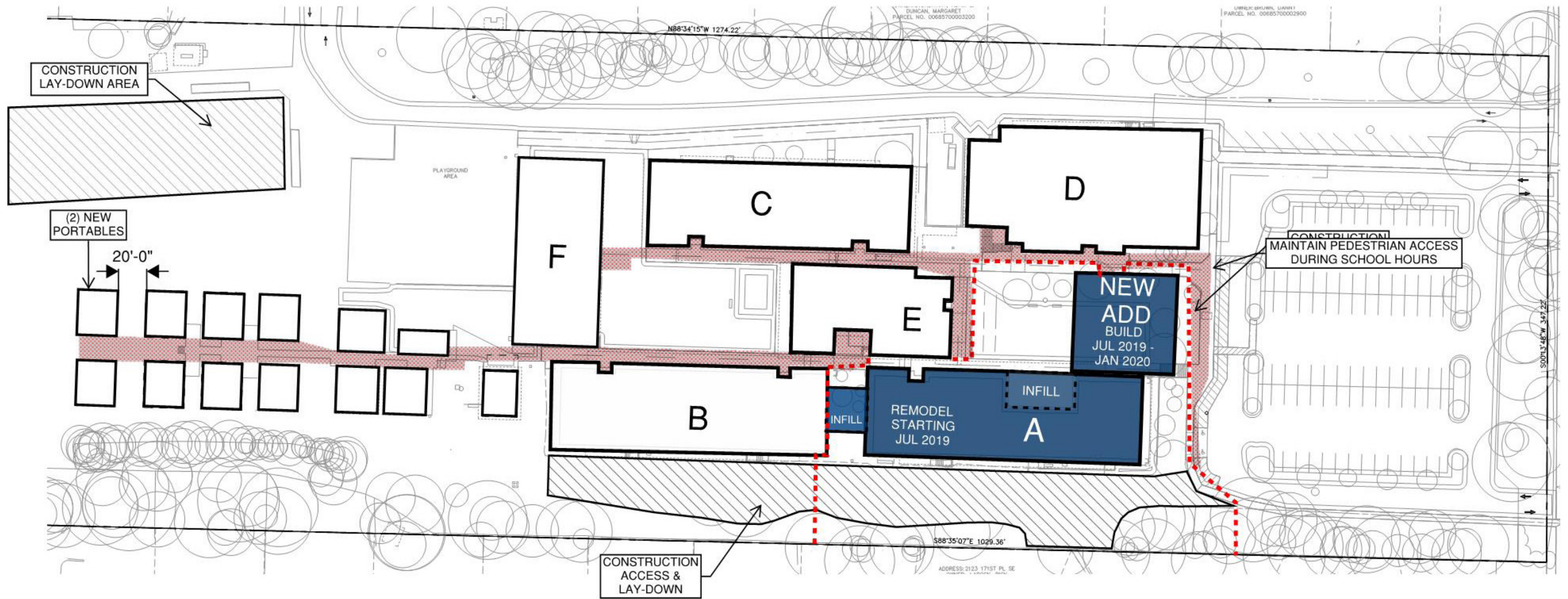


LIBRARY LOBBY

Woodside Elementary School
September, 2019



SITE PLAN - PHASE 1
SCALE: NTS



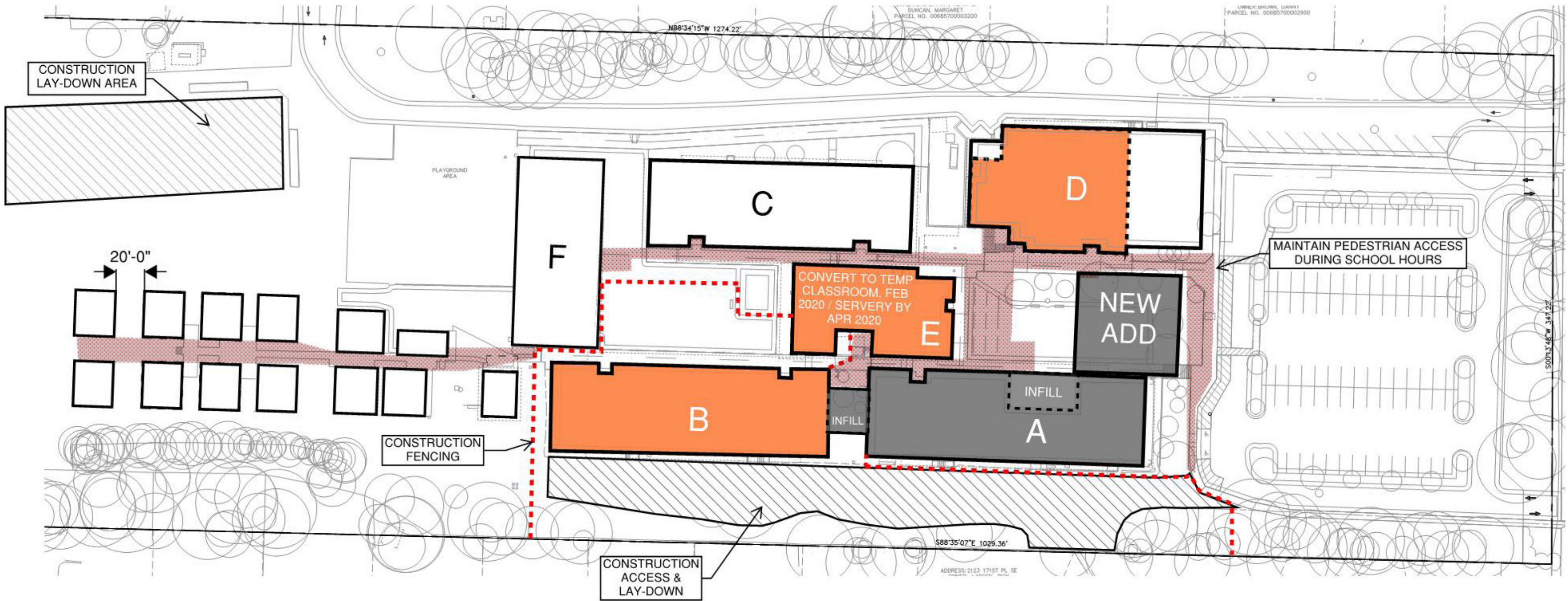
PHASE 1 (JUL 2019 - FEB 2020)

1. KINDERGARTEN MOVES INTO BUILDING B
2. BUILDING A IS REMODELED, INCLUDING NEW VESTIBULE INFILL, JUL 2019 - JAN 2020
3. NEW ADDITION BUILT, JUL 2019 - FEB 2020
4. (2) NEW PORTABLES JUL 2019 - SEP 2019
5. BUILDING E (LIBRARY) ADD TEMP. CLASS ROOM, JUL 2019

Woodside Elementary School
September, 2019



SITE PLAN - PHASE 2
SCALE: NTS



PHASE 1 (JUL 2019 - FEB 2020)

1. KINDERGARTEN MOVES INTO BUILDING B
2. BUILDING A IS REMODELED, INCLUDING NEW VESTIBULE INFILL, JUL 2019 - JAN 2020
3. NEW ADDITION BUILT, JUL 2019 - FEB 2020
4. (2) NEW PORTABLES JUL 2019 - SEP 2019
5. BUILDING E (LIBRARY) ADD TEMP. CLASS ROOM, JUL 2019

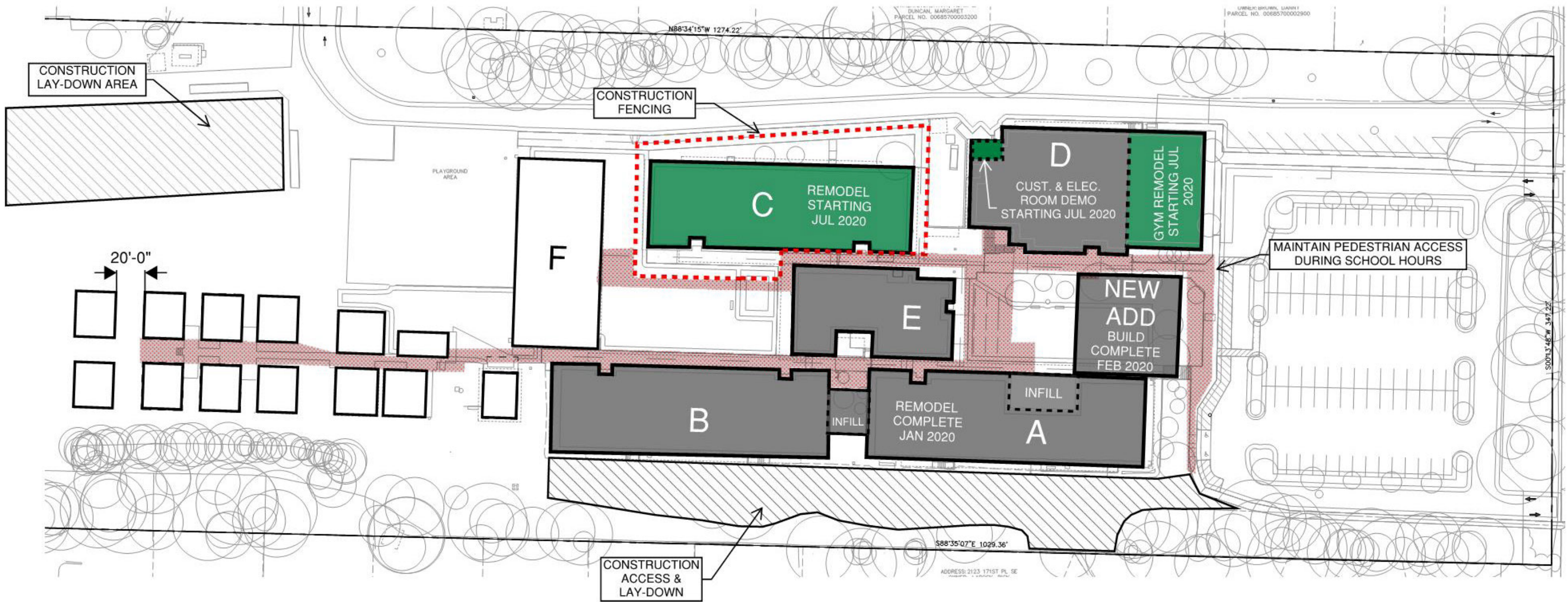
PHASE 2 (FEB 2020 - JUL 2020)

1. KINDERGARTEN MOVES BACK INTO BUILDING A
2. BUILDING B IS REMODELED, JAN 2020 - AUG 2020
3. BUILDING E IS CONVERTED TO TEMP SERVERY & BY APR 2020
4. BUILDING D KITCHEN & CAFETERIA REMODEL, FEB 2020 - AUG 2020, EXCLUDES ELECTRICAL & CUSTODIAL ROOMS

Woodside Elementary School
September, 2019



SITE PLAN - PHASE 3
SCALE: NTS



PHASE 1 (JUL 2019 - FEB 2020)

1. KINDERGARTEN MOVES INTO BUILDING B
2. BUILDING A IS REMODELED, INCLUDING NEW VESTIBULE INFILL, JUL 2019 - JAN 2020
3. NEW ADDITION BUILT, JUL 2019 - FEB 2020
4. (2) NEW PORTABLES JUL 2019 - SEP 2019
5. BUILDING E (LIBRARY) ADD TEMP. CLASS ROOM, JUL 2019

PHASE 2 (FEB 2020 - JUL 2020)

1. KINDERGARTEN MOVES BACK INTO BUILDING A
2. BUILDING B IS REMODELED, JAN 2020 - AUG 2020
3. BUILDING E IS CONVERTED TO TEMP SERVERY & BY APR 2020
4. BUILDING D KITCHEN & CAFETERIA REMODEL, FEB 2020 - AUG 2020, EXCLUDES ELECTRICAL & CUSTODIAL ROOMS

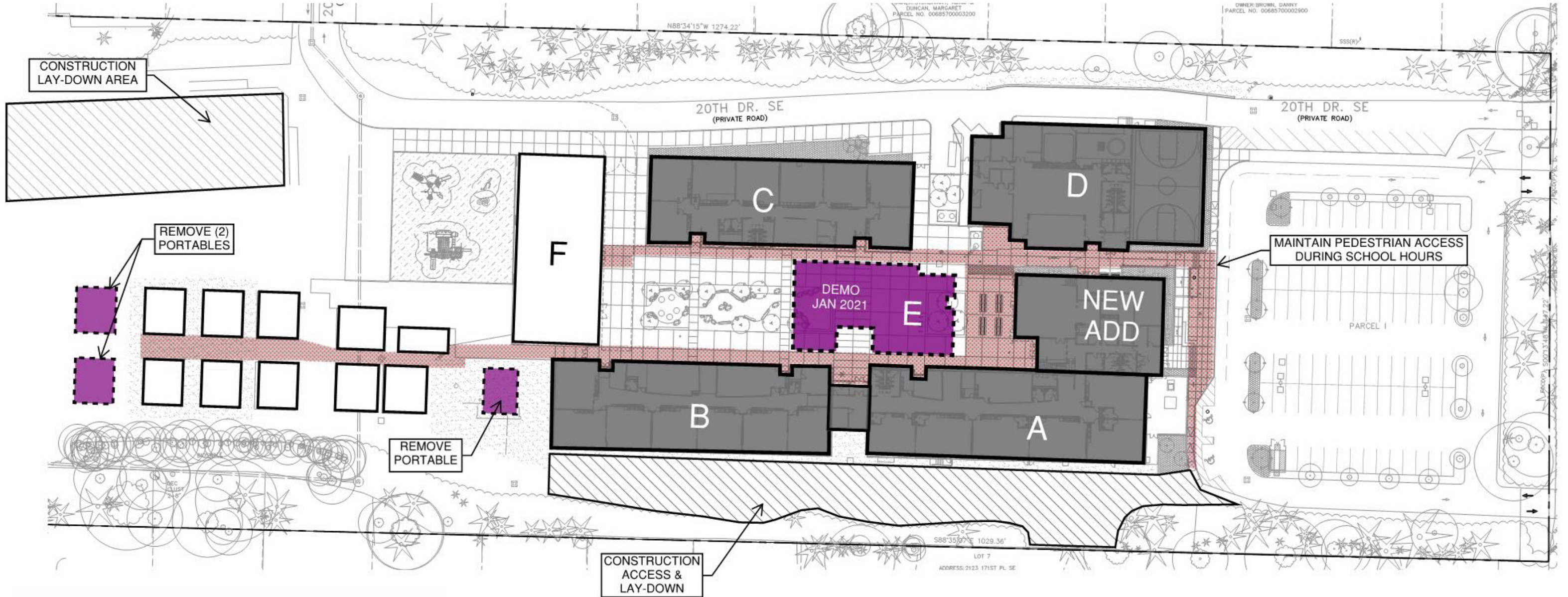
PHASE 3 (JUL 2020 - DEC 2020)

1. REMODEL GYM, JUL 2020 - OCT 2020
2. REMODEL BUILDING C, JUL 2020 - DEC 2020
3. DEMO EXISTING ELECTRICAL & CUSTODIAL ROOMS, JUL 2020 - SEP 2020

Woodside Elementary School
September, 2019



SITE PLAN - PHASE 4
SCALE: NTS



PHASE 1 (JUL 2019 - FEB 2020)

1. KINDERGARTEN MOVES INTO BUILDING B
2. BUILDING A IS REMODELED, INCLUDING NEW VESTIBULE INFILL, JUL 2019 - JAN 2020
3. NEW ADDITION BUILT, JUL 2019 - FEB 2020
4. (2) NEW PORTABLES JUL 2019 - SEP 2019
5. BUILDING E (LIBRARY) ADD TEMP. CLASS ROOM, JUL 2019

PHASE 2 (FEB 2020 - JUL 2020)

1. KINDERGARTEN MOVES BACK INTO BUILDING A
2. BUILDING B IS REMODELED, JAN 2020 - AUG 2020
3. BUILDING E IS CONVERTED TO TEMP SERVERY & BY APR 2020
4. BUILDING D KITCHEN & CAFETERIA REMODEL, FEB 2020 - AUG 2020, EXCLUDES ELECTRICAL & CUSTODIAL ROOMS

PHASE 3 (JUL 2020 - DEC 2020)

1. REMODEL GYM, JUL 2020 - OCT 2020
2. REMODEL BUILDING C, JUL 2020 - DEC 2020
3. DEMO EXISTING ELECTRICAL & CUSTODIAL ROOMS, JUL 2020 - SEP 2020

PHASE 4 (FEB 2020 - APR 2021)

1. SITE WORK
2. REMOVE PORTABLES, JAN 2021
3. DEMO BUILDING E, JAN 2021

Woodside Elementary School
September, 2019

